

ROYAL PALMS

APARTMENT HOMES

1295 East Lincoln Avenue, Anaheim, CA 92805

Phone & Fax: (714) 535-8675

E-mail: RoyalPalms@AptHomes4u.com

Large 1 & 2 Bedroom Apartment Homes

- Cable Ready
- Air-Conditioning
- Ceiling Fans
- Vertical Blinds
- Sparkling Swimming Pool
- Carports with Storage
- Gated Parking
- Gas & Water PAID
- Convenient Laundry Facility
- Green Lush Landscaping
- Professional On-Site Management
- Near 5, 91 & 57 Freeways, Bus-line, Schools & Shopping Center
- Sorry, No Pets



Rental Office: 1295 East Lincoln Ave, Apartment 1

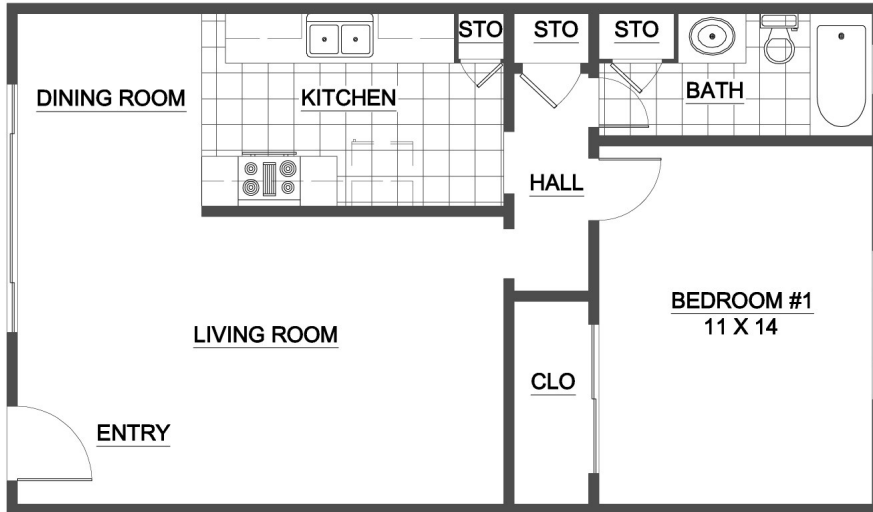
Apartment Available: _____ Rent: _____ Deposit: _____

Application Fee: _____ Move-In Bonus: _____ Available Move-In Date: _____

Referred By: _____

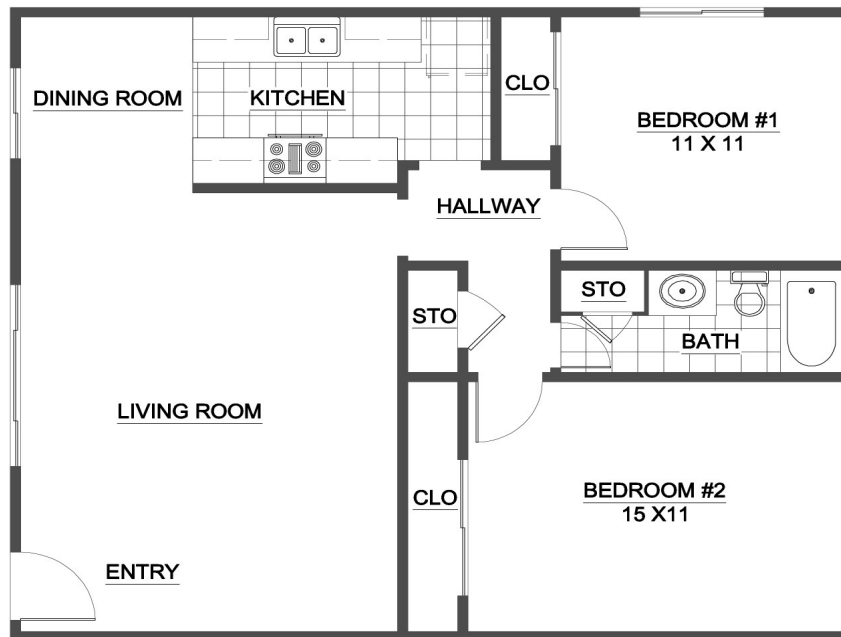
Professionally Managed by Schroeder Management Company, Inc. BRE#01176652
1200 Newport Center Dr., Suite 260, Newport Beach, CA 92660 (949) 675-4900





1 BEDROOM UNIT
APPROX. 680 SQ.FT.

ROYAL PALMS
APARTMENTS



2 BEDROOM UNIT
APPROX. 896 SQ.FT.

ROYAL PALMS
APARTMENTS